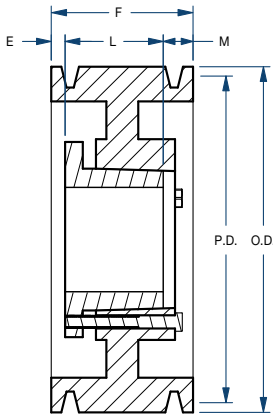


Sheaves

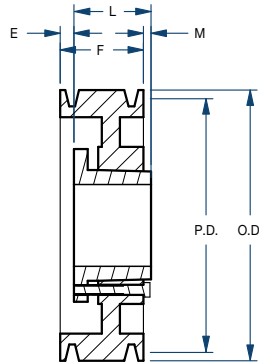
3C/QD STYLE



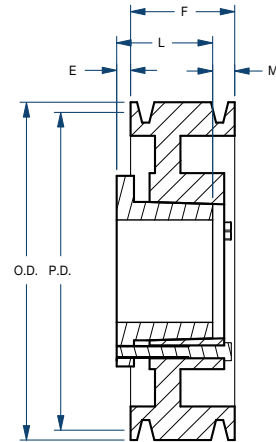
BLACKSTAR®



Type A



Type B



Type D

Part No.	Bushing	Bore Range (in)	Type	Diameter (in)		Dimensions (in)				Weight less Bushing (lbs)
				Pitch	Outside	E	F	L	M	
3C50SD	SD	1/2 – 2	A	5.0	5.40	19/32	3-1/4	1-13/16	27/32	10.0
3C55SD	SD	1/2 – 2	A	5.5	5.90	19/32	3-1/4	1-13/16	27/32	12.0
3C60SF	SF	1/2 – 2-15/16	D	6.0	6.40	23/32	3-1/4	2-1/16	1-29/32	15.0
3C70SF	SF	1/2 – 2-15/16	A	7.0	7.40	13/32	3-1/4	2-1/16	25/32	18.0
3C75SF	SF	1/2 – 2-15/16	A	7.5	7.90	13/32	3-1/4	2-1/16	25/32	20.0
3C80E	E	7/8 – 3-1/2	B	8.0	8.40	17/32	3-1/4	2-3/4	1/32	26.0
3C85E	E	7/8 – 3-1/2	B	8.5	8.90	17/32	3-1/4	2-3/4	1/32	29.0
3C90E	E	7/8 – 3-1/2	A	9.0	9.40	15/32	3-1/4	2-3/4	1/32	32.0
3C95E	E	7/8 – 3-1/2	A	9.5	9.90	15/32	3-1/4	2-3/4	1/32	34.0
3C100E	E	7/8 – 3-1/2	A	10.0	10.40	15/32	3-1/4	2-3/4	1/32	36.0
3C105E	E	7/8 – 3-1/2	A	10.5	10.90	15/32	3-1/4	2-3/4	1/32	38.0
3C110E	E	7/8 – 3-1/2	A	11.0	11.40	15/32	3-1/4	2-3/4	1/32	40.0
3C120E	E	7/8 – 3-1/2	A	12.0	12.40	15/32	3-1/4	2-3/4	1/32	43.0
3C130E	E	7/8 – 3-1/2	A	13.0	13.40	15/32	3-1/4	2-3/4	1/32	45.0
3C140E	E	7/8 – 3-1/2	A	14.0	14.40	15/32	3-1/4	2-3/4	1/32	51.0
3C160E	E	7/8 – 3-1/2	A	16.0	16.40	15/32	3-1/4	2-3/4	1/32	59.0
3C180E	E	7/8 – 3-1/2	A	18.0	18.40	15/32	3-1/4	2-3/4	1/32	65.0
3C200E	E	7/8 – 3-1/2	D	20.0	20.40	7/32	3-1/4	2-3/4	23/32	70.0
3C240E	E	7/8 – 3-1/2	D	24.0	24.40	7/32	3-1/4	2-3/4	23/32	80.0
3C270F	F	1 – 4	D	27.0	27.40	21/32	3-1/4	3-3/4	5/32	105.0
3C300F	F	1 – 4	D	30.0	30.40	21/32	3-1/4	3-3/4	5/32	120.0
3C360F	F	1 – 4	D	36.0	36.40	21/32	3-1/4	3-3/4	5/32	140.0
3C440F	F	1 – 4	D	44.0	44.40	21/32	3-1/4	3-3/4	5/32	170.0
3C500F	F	1 – 4	D	50.0	50.40	21/32	3-1/4	3-3/4	5/32	190.0